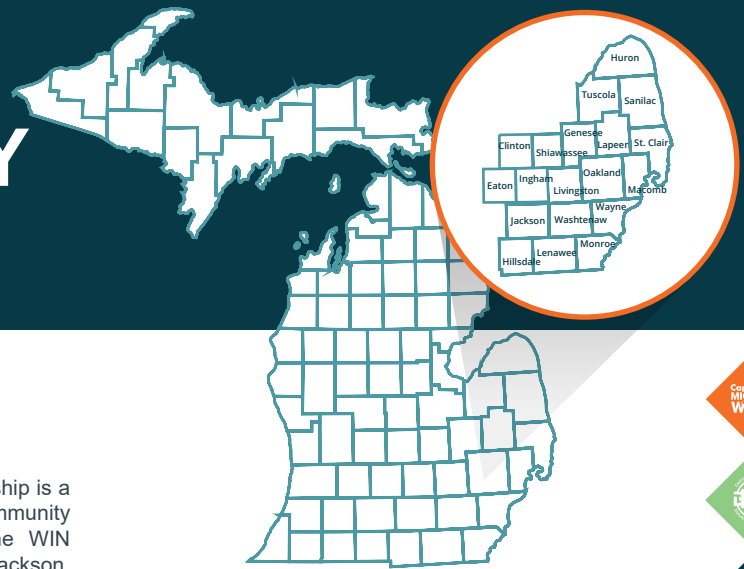


# OAKLAND COUNTY LABOR SHED



## Introduction

The Workforce Intelligence Network for Southeast Michigan (WIN) partnership is a collaboration of seven Michigan Works! Agencies (MWAs) and ten community colleges across a 19-county region in Michigan. The counties in the WIN partnership include: Clinton, Eaton, Genesee, Hillsdale, Huron, Ingham, Jackson, Lapeer, Lenawee, Livingston, Macomb, Monroe, Oakland, Saint Clair, Sanilac, Shiawassee, Tuscola, Washtenaw, and Wayne, along with the City of Detroit.

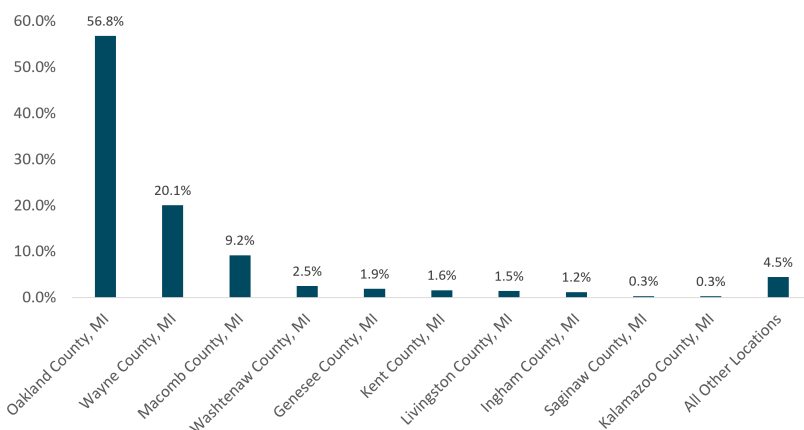
The WIN partnership region's labor shed highlights why, when it comes to talent, we must think regionally: The workforce is mobile. Although 90.4% of the region's workforce live and work<sup>1</sup> in the 19-county area, not all residents work in their home county. It is not uncommon for workers to commute one or two counties over for work. This means that the residents in every county should be ready for the job demands of employers hiring throughout southeast Michigan.

This document provides detailed information on where employees in the area commute to and from each day for work, how far they travel, along with other information about workers and businesses in the area. For more detail on the labor market, please see WIN's Quarterly Labor Market Report publications.

## Where Residents Work

In 2019, Oakland County's workforce consisted of 568,442 residents. 323,035 (56.8 percent) of the residents lived and worked within Oakland County, while the remaining 245,407 residents (43.2 percent) traveled outside of the county for work. The percentage of residents that traveled outside of the county for work has slightly increased since 2017.

Oakland County residents have maintained very similar mobility patterns over the last few years. In 2019, 16.3 percent of the county's workforce (92,884 individuals) traveled more than 25 miles to their place of employment, compared to 16.3 percent (90,908 individuals) in 2017. Oakland has seen considerable job growth. Wayne County was the most popular destination outside of Oakland County for residents to find employment. 113,997 residents (20.1 percent of the county's workforce) traveled to Wayne County for employment in 2019, followed by 52,352 residents (9.2 percent of the county's workforce) that traveled to Macomb County.



Source: U.S. Census OnTheMap, 2019  
Analysis: Workforce Intelligence Network



**42,213**

BUSINESS  
ESTABLISHMENTS IN 2019



**234,287**

JOBS POSTED ONLINE IN  
2019



**323,035**

WORKERS THAT LIVE AND  
WORK IN  
OAKLAND COUNTY



**92,884**

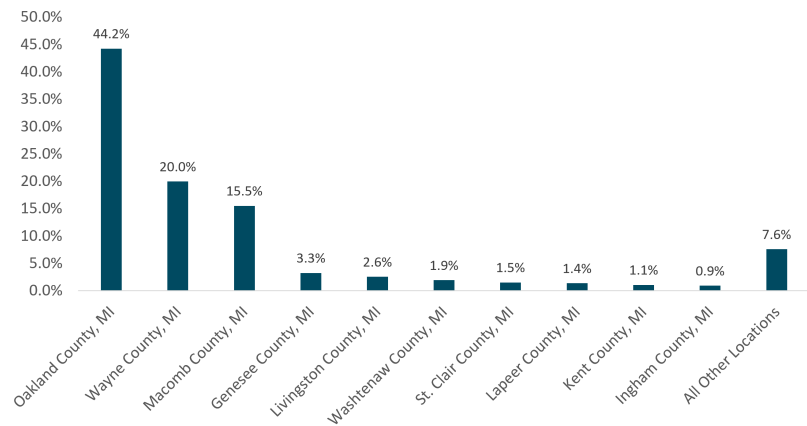
RESIDENTS TRAVELING MORE  
THAN 25 MILES TO WORK



## Where Workers Live

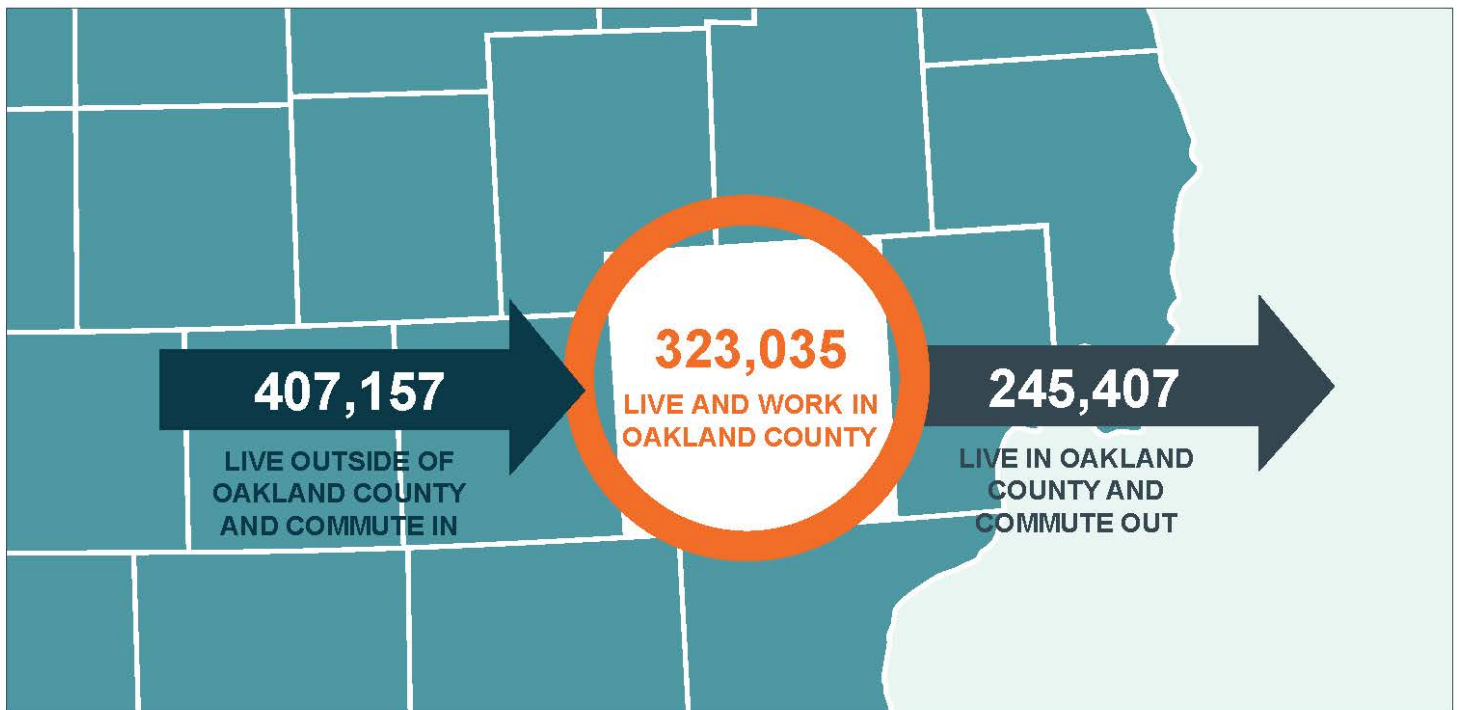
Oakland County is a net importer of workers, making the county a job center. In 2019, 730,192 workers were employed in Oakland County. 407,157 (55.8 percent) of those workers were employed in Oakland but lived outside of its borders. Of those that traveled to Oakland County for work, 104,537 (25.7 percent) of the workers were 29 or younger. While Oakland County employers were able to attract many young workers in 2019, 170,141 (52.7 percent) of the internal jobs were filled by workers between the ages of 30 and 54. This indicates a desire for experienced workers in Oakland County.

Similar to the outflow of Oakland County residents, the great majority of workers that travel to Oakland reside in either Wayne or Macomb counties. 145,905 (20.0 percent) of Oakland County workers travel in from Wayne County followed by 113,298 (15.5 percent) that travel in from Macomb County. 153,822 (21.1 percent) of the 730,192 workers in Oakland County traveled more than 25 miles to their place of employment in 2019.



Source: U.S. Census OnTheMap, 2019  
Analysis: Workforce Intelligence Network

## COMMUTING PATTERN



<sup>1</sup>This fact and labor shed statistics throughout this brief are analyzed from the U.S. Census OnTheMap, Center for Economic Studies (2019).

Data Sources: Lightcast and U.S. Census OnTheMap  
Analysis: Workforce Intelligence Network